



RESIDENTIAL ESTATE AGENTS
PROPERTY LETTING & MANAGING AGENTS
VALUERS & PROPERTY CONSULTANTS
CHARTERED SURVEYORS

01722 336422

www.hwwhite.co.uk WEB



Salisbury

£1,250 PCM

20 Ladysmith, Gomeldon, Salisbury, Wiltshire, SP4 6LE

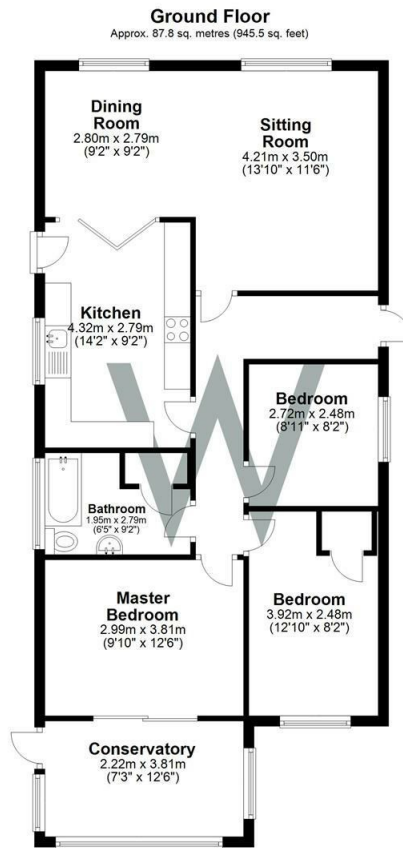




Description

A very nicely presented, three bedroom, detached bungalow on a sunny plot with a nice sized garden, available unfurnished on a long-term basis. The accommodation comprises porch door leading through to side door into the kitchen which has a fitted double electric oven and ceramic electric hob, spaces for a washing machine, dishwasher, under-counter fridge and under-counter freezer.

L-shaped sitting/living room with a feature fireplace containing electric woodburner (chimney not in commission). Front hall, off which there are three double bedrooms and a family bathroom with a thermostatic shower over the bath. The main bedroom has sliding doors into a rear conservatory with wooden floor and door to garden, etc. The property has a relatively new, gas-fired boiler for central heating and hot water, double glazed windows, cavity wall and roof insulation. Outside there is an enclosed front, mainly lawned, garden with a driveway for 2/3 cars, leading up to a single garage which has been partitioned for storage at the front with a utility area at the rear (power but no water). The side door of the garage is opposite the kitchen door connected by a perspex roof which provides a useful covered porch area with door to driveway but not designed as being a room or fully waterproof. To the rear there is an enclosed garden with terrace, large lawn area, flowerbeds, tin shed and path around the side to a front gate. The property is in good decorative order, mostly re-carpeted and is offered unfurnished on a potentially long-term basis.



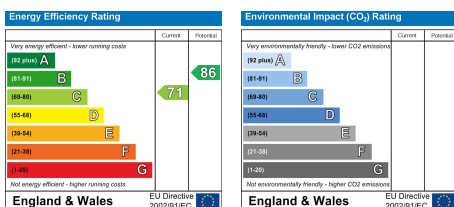
Viewing

By confirmed appointment only with the vendor's agent. Telephone 01722 336422.

Agents Note

Every effort has been made to prepare these particulars as carefully as possible. However, intending purchasers should be aware that their accuracy is not guaranteed, nor do they form part of any contract. Please note that the quoted room sizes are approximate and we advise you to verify the dimensions carefully, especially when ordering carpets, fittings, or any built in furniture. Where heating and electrical equipment is included, please be aware that we have not tested the appliances.

18748540/Miss Carly Padfield



W
WHITES

01722 336422

47 Castle Street, Salisbury SP1 3SP 01722 320600 FAX
residential-sales@hwwhite.co.uk E-MAIL www.hwwhite.co.uk WEB